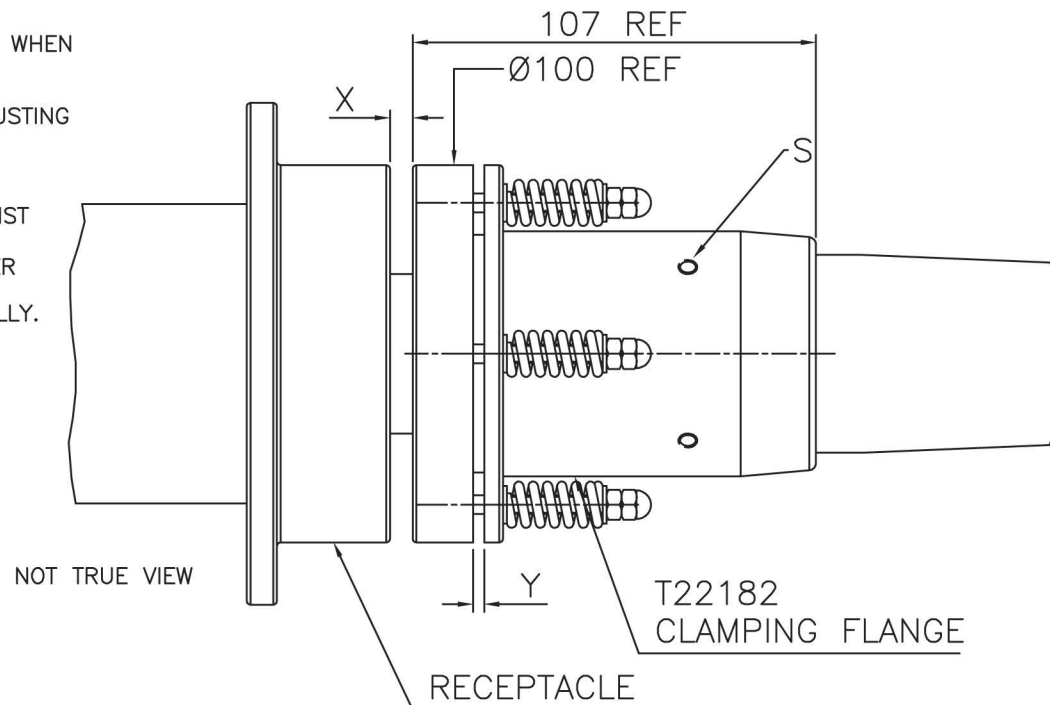
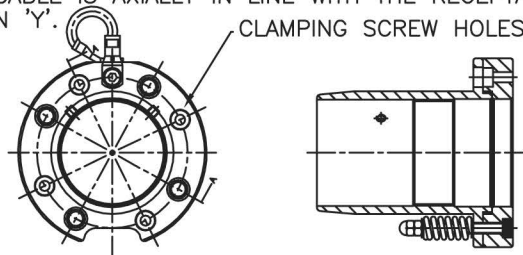


ADJUST BY ROTATING THE CLAMPING FLANGE SO THAT DIMENSION 'X' IS 9mm WHEN THE TERMINATION HAS BEEN FULLY INSERTED INTO THE RECEPTACLE AND IS AXIALLY IN LINE WITH THE RECEPTACLE.  
 ENSURE THE CABLE IS SUPPORTED AT ALL TIMES BUT ESPECIALLY WHILE ADJUSTING THE FLANGE. ADJUST BY ROTATING THE ORIENTATION OF CLAMPING FLANGE TO ALIGN WITH THE MATING HOLE POSITIONS IN THE RECEPTACLE.  
 NOTE: ALWAYS ADJUST SO AS TO INCREASE DIMENSION 'X'.  
 LOCK CLAMPING FLANGE BY TIGHTENING THE FLANGE GRUB SCREWS (S) AGAINST THE FERRULE.  
 REMOVE THE TERMINATION AND GREASE THE TAPERED SECTION OF THE RUBBER TERMINATION WITH HIGH VOLTAGE GREASE.  
 REPLACE IN RECEPTACLE AND TIGHTEN DOWN CLAMPING SCREWS 4 OFF EQUALLY.

AS THE FLANGE IS TIGHTENED DOWN GAP 'Y' WILL OPEN.  
 CHECK GAP 'Y' IS NOT LESS THAN 3mm IF LESS THAN 3mm RE-ADJUST.

CAUTION:  
 IT IS IMPORTANT TO CHECK DIMENSION 'Y' AFTER APPROX. 1 WEEK.  
 INSPECT AND ADJUST AS ABOVE IF 'Y' IS LESS THAN 1mm  
 ENSURE CABLE IS AXIALLY IN LINE WITH THE RECEPTACLE WHEN MEASURING DIMENSION 'Y'.



THREAD M56x1.5mm PITCH ISO  
 4 HOLES Ø5.4 THROUGH EQUISPACED ON 80.00 PCD  
 TO SUIT M5 CAP HEAD FIXINGS  
 FOR FULL DETAILS SEE T22182

ALWAYS REFER TO EQUIPMENT MANUFACTURES SERVICE MANUALS FOR SERVICE/INSPECTION INTERVALS

#### TECHNICAL DATA:

ONLY ESSEX X-RAY APPROVED RECEPTACLES SHOULD BE USED.

FOR FULL CABLE DATA SEE ESSEX CABLE DATA SHEET

#### ACCESSORIES:

INSTALLATION GREASE P00075

#### INSTALLATION:

**WARNING:**  
 CABLE SHOULD ONLY BE FITTED BY A TRAINED PERSON.  
 CABLE CAN RETAIN ELECTRICAL CHARGE.  
 DISCHARGE TO EARTH BEFORE HANDLING.  
 A SUITABLE HIGH VOLTAGE GREASE SHOULD BE APPLIED TO THE TERMINATION.  
 ENSURE THAT THE TERMINATION IS FULLY INSERTED IN THE SOCKET BEFORE ADJUSTING CLAMPING FLANGE.

# ESSEX

Dandong Light Electric Co.,Ltd  
 Rm.1606 Jiadi Square,No.64,Binjiang Middle Rd,  
 Zhenxing, Dandong, Liaoning China  
 T:0415-6123232  
 F:0415-6123533

#### REVISIONS

| NO. | DATE | BY |
|-----|------|----|
|     |      |    |
|     |      |    |
|     |      |    |
|     |      |    |

DUE TO CONTINUING PRODUCT DEVELOPMENT ESSEX X-RAY RESERVES THE RIGHT TO MODIFY DATA WITHOUT NOTICE

| DRAWN | APPROVED | DATE     | ISSUE | SCALE  |
|-------|----------|----------|-------|--------|
| MGM   |          | 20.11.09 | 1     | N.T.S. |

© NOT TO BE REPRODUCED IN WHOLE OR PART WITHOUT PRIOR PERMISSION OF ESSEX X-RAY & MEDICAL EQUIPMENT LTD.

TITLE  
 FITTING INSTRUCTIONS FOR FLANGED TERMINATIONS  
 225KV (R28) LOW MAINTENANCE

DRAWING No.  
 DS1080